



**TALYA**

FENETRE - PORTE - VERRE

ELEGANCE IN EVERY DETAIL







## WHO WE ARE

### We are at your service with 15 years of industry experience

With 15 years of experience in the sector, we offer the highest quality building systems at affordable prices. Quality, fast delivery and customer satisfaction are our priority in Window, Door, Sliding, Roller Shutter, Glass, Facade and more.



#### Technology Orientated Production

We carry out our productions in our modern factory covering 1200 square metres of closed and 800 square metres of open park.



#### Professional Team

We work with a team of 5 engineers, 2 architects, 4 international marketing experts and 20 experienced employees.



#### Customer Orientated Service Principle

Customer satisfaction is our highest priority. We strive to provide excellent customer service along with our high quality products.



#### Expert Team

Our expert staff and field team offer you the most superior service with their strong knowledge and experience in their own branches.



#### Latest Technology Machine Park

With our state-of-the-art machinery and infrastructure, we produce our products in accordance with high quality standards and offer reliable and durable products to our customers.



#### Quality Orientated Products

Our goal is to provide our customers with the highest quality products and to fulfill their expectations. Using the latest technologies and the best materials, we design our products for durability, safety and energy saving.



#### Professional Installation and Maintenance

We offer our customers professional assembly and installation of our products. We also provide support for the maintenance and repair of our products.



#### High Durability and Energy Saving

Our products are made of the best quality materials and manufactured with the latest production technologies. This ensures high durability and long service life of our products. It also helps you to save energy.

---

## WHAT DO WE OFFER



+15 Years Sector Experience



Export to +8 Countries



+300 Finished Project



+40 Ongoing Project

---

## OUR ADVANTAGES

Fast Termination

24/7 Customer Orientation

Fast and Accurate Quotation

Expert Team

Stock Working

Experienced Assembly Team

Assembly Service Within 24 Hours to Many Points in Europe

Active Field Visits



WHERE ARE WE

## **CREATING SPACES, CONNECTING WORLDS**

Our references are a reflection of our successful projects. Our customers' feedback is the key to continuous improvement for us.

We strive to provide you with the best service and look forward to writing new success stories in the future.





# REFERENCES





Lower Saxony



Lower Saxony



Netherlands



Netherlands



North Rhine-Westphalia



North Rhine-Westphalia



Paderborn, North Rhine-Westphalia



Paderborn, North Rhine-Westphalia

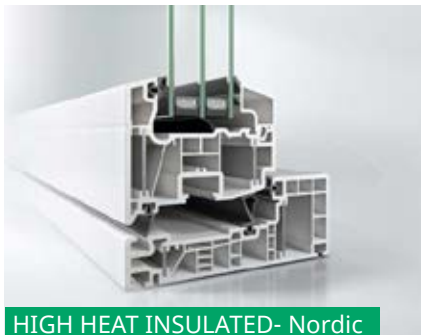
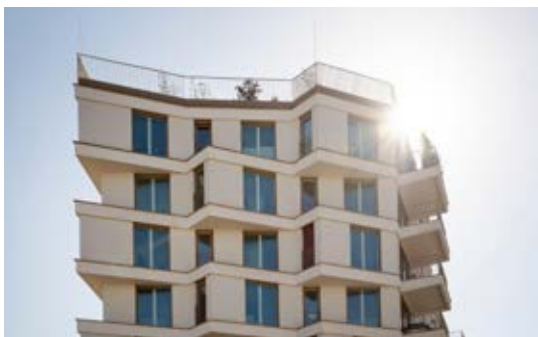
## PVC WINDOW SYSTEMS



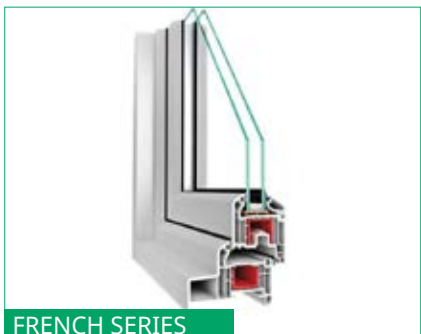
HEAT INSULATED CT70 AS



HIGH HEAT INSULATED- Living



HIGH HEAT INSULATED- Nordic



FRENCH SERIES



NETHERLANDS SERIES



## ALUMINIUM WINDOW SYSTEMS



HEAT INSULATED- AWS 60



HIGH HEAT INSULATED- AWS 90 SI +



FRENCH SERIES- MONOBLOCK



## ALUMINIUM DOOR SYSTEMS



## PVC DOOR SYSTEMS



## PVC + ALUMINIUM DOOR SYSTEMS



PVC SLIDING SYSTEMS



INOVA - Corona S150



SIMPLE SLIDE - Corona S74



LIFT SLIDE - Corona S74



SMART SLIDE - Easy Slide



ALUMINIUM SLIDING SYSTEMS



FOLDING - UNINSULATED  
ASS 50 FD NI



FOLDING - HIGH HEAT INSULATED  
ASS 70 FD



SLIDING - UNINSULATED -  
ASS 39 PD NI



SLIDING - HEAT INSULATED  
ASS 70 HI





HALF LENTO



OUTSIDE FITTING



MONOBLOCK



SECRET BOX



LAMINATED/SAFETY GLASS



LOW-E CAM



HEAT GLASS



REFLECTIVE GLASS



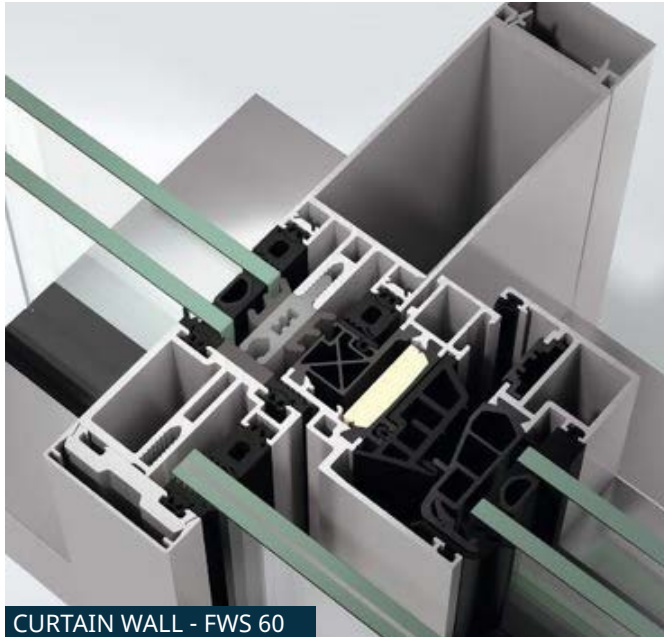
TEMPERED GLASS



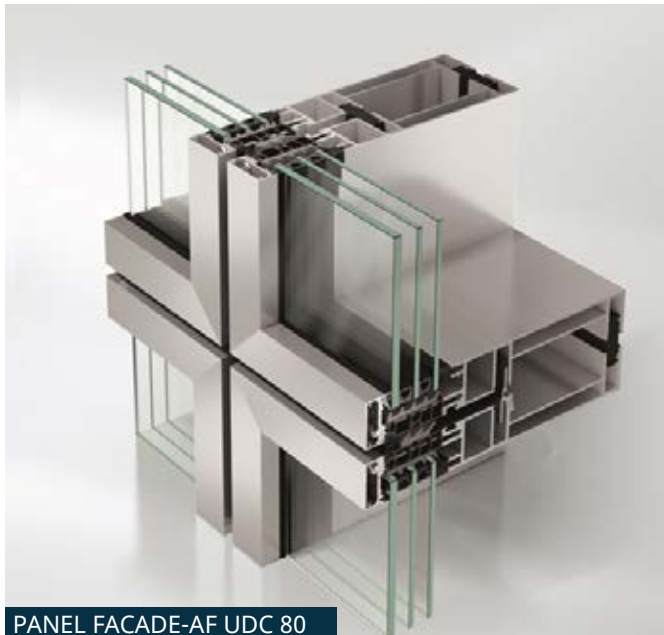
ACOUSTIC GLASS



## ALUMINIUM FACADE SYSTEMS



## PVC FACADE SYSTEMS



## FLUSHROOM



PLENTED FLY SCREEN

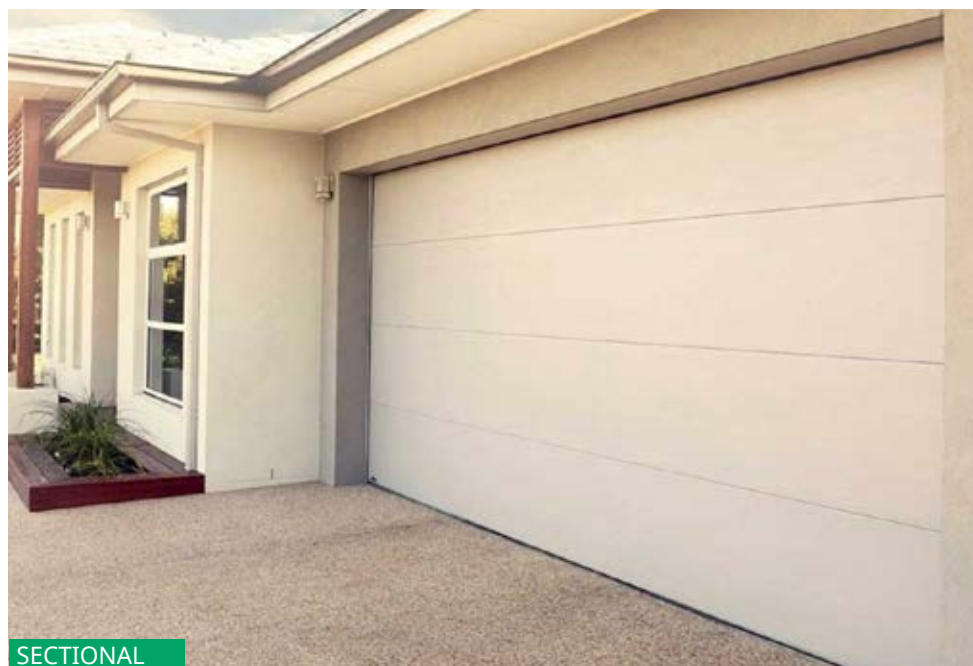
## GARAGE DOORS



SPIRAL



STORE FLY SCREEN



SECTIONAL

## GUILLOTINE SYSTEMS



AUTOMATIC GUILLOTINE

## ALUMINUM GLASS RAILING



GLASS RAILING

## ZIP CURTAIN



ZIP CURTAIN

**TALYA**  
FENETRE - PORTE - VERRE

**A:** Saray, 6 Nolu Cd.  
No: 6-8, 06980  
Kahramankazan/Ankara

**P:** +33756916207  
+491634921165

**M:** sales@talyasystems.com  
info@talyasystems.com

**SCHÜCO**  
PARTNER